



FLOORPLANS

Conquest 2002

• **CLASS A MOTORHOMES** •



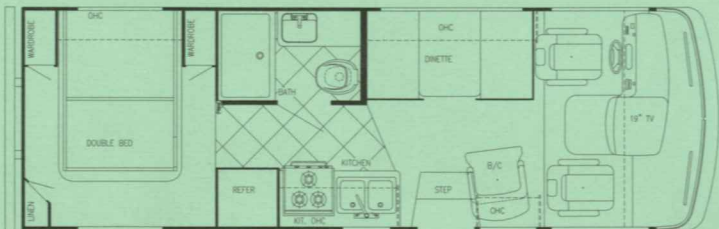
• **GAS MODELS** •
FLOORPLANS & SPECIFICATIONS





FLC Conquest

• CLASS A • MOTORHOMES

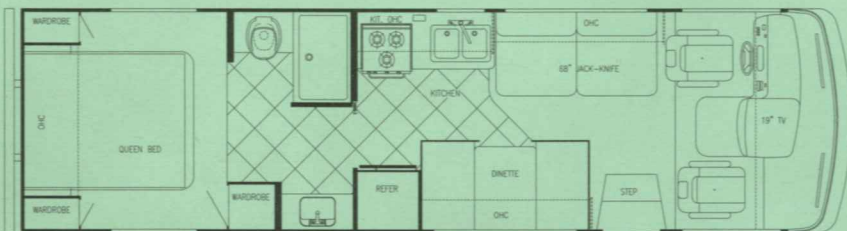


Model 8240

Conquest Sport

*Specifications on the Sport Series are different than the Limited Edition Series.

| | |
|--------------------|------------|
| Chassis | Workhorse |
| Engine | V-8/8.1 Lt |
| GVWR | 12,300 |
| Wheelbase | 158" |
| Ext. Length | 25'-2" |
| Ext. Height w/AC | 11'-6" |
| Ext. Width | 96" |
| Int. Height | 77" |
| Int. Width | 91 1/4" |
| Fresh | 32 gal. |
| Grey | 38 gal. |
| Black | 38 gal. |
| Water Heater w/DSI | 6 gal. |
| LP Gas Tanks | 48 lbs. |
| Fuel Tank (Gal.) | 40 gal. |
| Furnace (BTU's) | 25,000 |

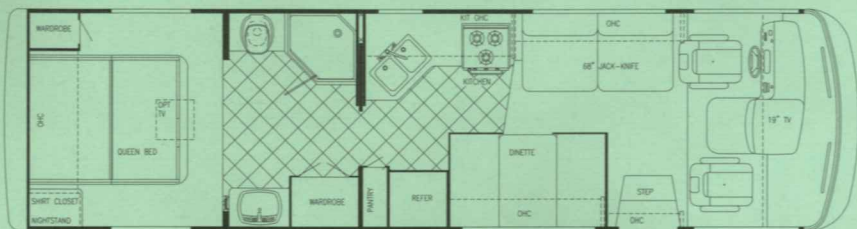


Model 8291

Conquest Sport

*Specifications on the Sport Series are different than the Limited Edition Series.

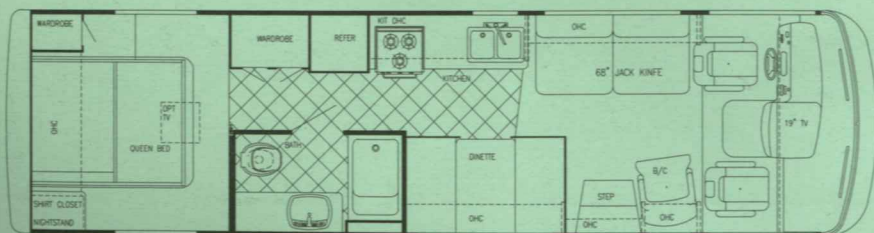
| | |
|--------------------|------------|
| Chassis | Workhorse |
| Engine | V-8/8.1 Lt |
| GVWR | 12,300 |
| Wheelbase | 178" |
| Ext. Length | 29'-8" |
| Ext. Height w/AC | 11'-6" |
| Ext. Width | 96" |
| Int. Height | 77" |
| Int. Width | 91 1/4" |
| Fresh | 32 gal. |
| Grey | 38 gal. |
| Black | 38 gal. |
| Water Heater w/DSI | 6 gal. |
| LP Gas Tanks | 48 lbs. |
| Fuel Tank (Gal.) | 40 gal. |
| Furnace (BTU's) | 25,000 |



Model 8301

Conquest Limited Edition

| | |
|--------------------|---------|
| Chassis | Ford |
| Engine | V-10 |
| GVWR | 15,700 |
| Wheelbase | 190" |
| Ext. Length | 32'-0" |
| Ext. Height w/AC | 11'-11" |
| Ext. Width | 101" |
| Int. Height | 83 1/2" |
| Int. Width | 96" |
| Fresh | 59 gal. |
| Grey | 50 gal. |
| Black | 50 gal. |
| Water Heater w/DSI | 6 gal. |
| LP Gas Tanks | 85 lbs. |
| Fuel Tank (Gal.) | 75 gal. |
| Furnace (BTU's) | 35,000 |



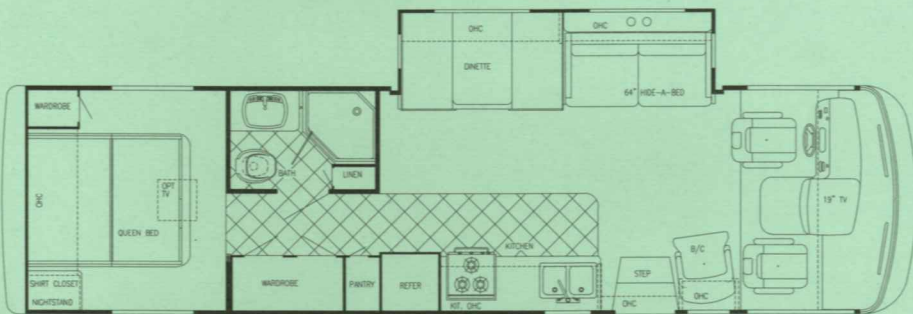
Model 8314

Conquest Limited Edition

| | |
|--------------------|---------|
| Chassis | Ford |
| Engine | V-10 |
| GVWR | 15,700 |
| Wheelbase | 190" |
| Ext. Length | 32'-0" |
| Ext. Height w/AC | 11'-11" |
| Ext. Width | 101" |
| Int. Height | 83 1/2" |
| Int. Width | 96" |
| Fresh | 59 gal. |
| Grey | 50 gal. |
| Black | 50 gal. |
| Water Heater w/DSI | 6 gal. |
| LP Gas Tanks | 85 lbs. |
| Fuel Tank (Gal.) | 75 gal. |
| Furnace (BTU's) | 35,000 |



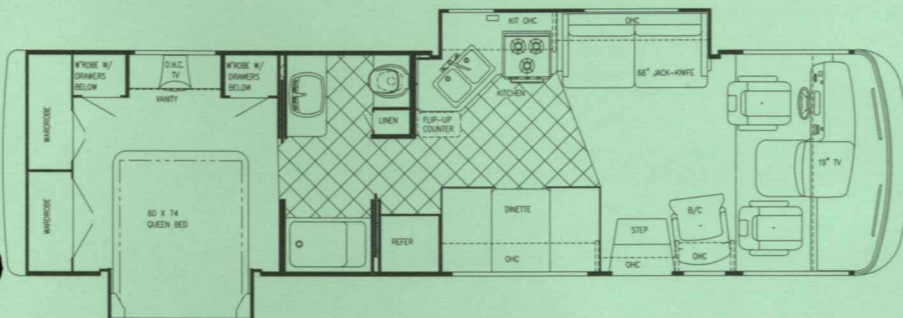
RVs • GAS MODELS •



Conquest
Limited Edition

| | |
|--------------------|---------|
| Chassis | Ford |
| Engine | V-10 |
| GVWR | 20,500 |
| Wheelbase | 208" |
| Ext. Length | 33'-4" |
| Ext. Height w/AC | 11'-11" |
| Ext. Width | 101" |
| Int. Height | 83 1/2" |
| Int. Width | 96" |
| Fresh | 59 gal. |
| Grey | 50 gal. |
| Black | 50 gal. |
| Water Heater w/DSI | 6 gal. |
| LP Gas Tanks | 85 lbs. |
| Fuel Tank (Gal.) | 75 gal. |
| Furnace (BTU's) | 35,000 |

Model 8325



Conquest
Limited Edition

| | |
|--------------------|---------|
| Chassis | Ford |
| Engine | V-10 |
| GVWR | 20,500 |
| Wheelbase | 208" |
| Ext. Length | 33'-6" |
| Ext. Height w/AC | 11'-11" |
| Ext. Width | 101" |
| Int. Height | 83 1/2" |
| Int. Width | 96" |
| Fresh | 59 gal. |
| Grey | 50 gal. |
| Black | 50 gal. |
| Water Heater w/DSI | 6 gal. |
| LP Gas Tanks | 85 lbs. |
| Fuel Tank (Gal.) | 75 gal. |
| Furnace (BTU's) | 35,000 |

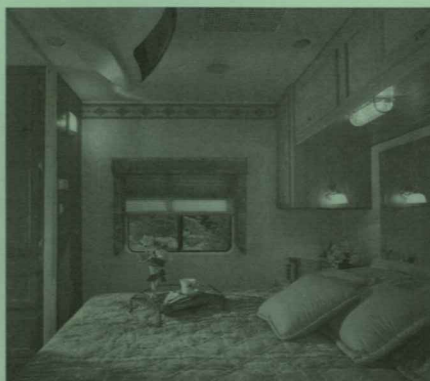
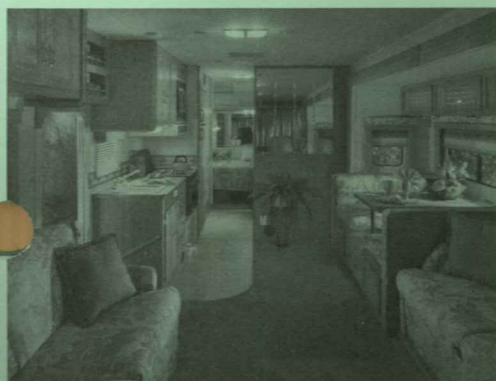
Model 8327



Conquest
Limited Edition

| | |
|--------------------|---------|
| Chassis | Ford |
| Engine | V-10 |
| GVWR | 20,500 |
| Wheelbase | 208" |
| Ext. Length | 33'-4" |
| Ext. Height w/AC | 11'-11" |
| Ext. Width | 101" |
| Int. Height | 83 1/2" |
| Int. Width | 96" |
| Fresh | 59 gal. |
| Grey | 50 gal. |
| Black | 50 gal. |
| Water Heater w/DSI | 6 gal. |
| LP Gas Tanks | 85 lbs. |
| Fuel Tank (Gal.) | 75 gal. |
| Furnace (BTU's) | 35,000 |

Model 8328





Conquest 2002

• CLASS A MOTORHOMES •

- Interior & Decor -

- Hardwood Cabinet Stiles and Doors
- Soft Touch Ceiling
- Self-Edged & Radius-Cornered Countertops
- Windshield Privacy Drape
- Designer Vinyl Cockpit Seats
- Aluminum Framed Furniture
- 3-Way Driver Seat
- Generous Overhead Storage
- 6' 11" Interior Ceiling Height
- Boarders in Kitchen & Bedroom

- Exterior & Construction -

- "Cradle of Strength" Construction:
 - Tubular Metal Cage Construction
 - Welded Steel Truss Sub-Floor System
- Vacuum-Bond Laminated Sidewalls
- Block Foam Insulation in Roof & Sidewalls
- Heated Holding Tanks
- Bus-Style Storage Doors
- Radius Entry Door
- Smooth Fiberglass Exterior
- Tinted Windows
- Galvanized Steel Exterior Storage
- Seamless Rubber Roof
- Automotive Style Caps - Front & Rear

- Bath & Water -

- Demand Water System
- City Water Hook-Up
- Double Residential-Style Sink
- Shower Stall
- Marine Commode
- Gravity Drains on Fresh Water Lines
- Neo-Angle Shower w/Glass Surround (8325, 8301)

- Electrical Systems -

- On Dash Emergency Start
- Easy-Access Dual Battery System
- 12-Volt, 45-Amp Converter
- Electric Supply Cord
- Electric Overload Protection
- Automotive-Type, Color-Coded Wiring
- 12-Volt Battery Disconnect
- Converter w/Battery Charger
- Auto Start Switch

- Deluxe Standard Features -

- 19" Color TV w/Remote
- Microwave Oven
- 3-Burner High-Performance Range
- Lighted, Power Range Hood

- 2-Door, 2-Way Refrigerator
- TV Antenna w/Amp and Boost & 2 Jacks
- Hydraulic Leveling System (8325, 8327)
- AM/FM CD Stereo w/4 Speakers

- Chassis -

- Ford - Super Duty w/Triton V-10 Engine and 4-Speed Automatic Transmission
- GVWR - 15,700 (8301, 8314)
- GVWR - 20,500 (8325, 8327)
- Electronic Ignition
- Power Steering and Brakes
- High Capacity Automotive Heater & A/C w/R134 Environmental Refrigerant
- Tilt Steering Wheel
- Cruise Control

- Popular Options -

- Workhorse - 8.1Lt V-8 Engine
- Wheel Covers
- Exterior Painted & Dye Cut Graphics
- Bedroom 11,000 BTU Ducted A/C w/Selector Switch
- Back-Up Monitor
- Hydraulic Leveling System (8301, 8314)
- Exclusive Bedroom Ceiling Overhead TV
- Computer Work Station
- Onan or Generic Generator

* Sport Series Specifications are different than the Limited Edition Series.

Conquest

Limited Edition



POST OFFICE BOX 1005 NAPPANEE, IN 46550
• YOUR DEALER •



VISIT
www.gulfstreamrv.com

FOR MORE DETAILED INFORMATION...
OR CALL 1-800-765-8787 EXT. 3288

* All weights and measures are approximate and subject to change without notice. For more information, contact your local dealer, www.gulfstreamRV.com, or Gulf Stream Coach, Inc. Gulf Stream Coach, Inc. reserves the right to make changes in prices, colors, materials, components and specifications and to discontinue models at any time without notice or obligation. Gulf Stream Coach, Inc. assumes no responsibility for any error in type or print reproduction of specifications or floorplans in this brochure. Photographs may show equipment or items that are optional and are not included in the purchase price of each coach, fifth wheel or trailer. © Copyright 2001 Gulf Stream Coach, Inc. Nappanee, Indiana USA

07/01-SP-10k