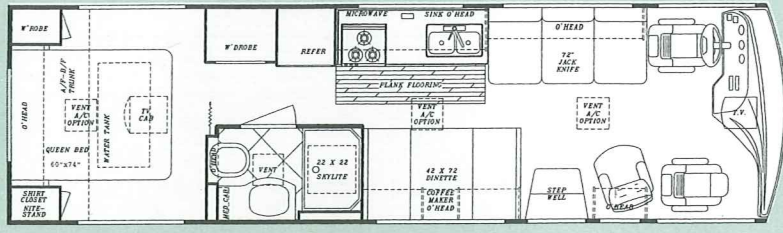
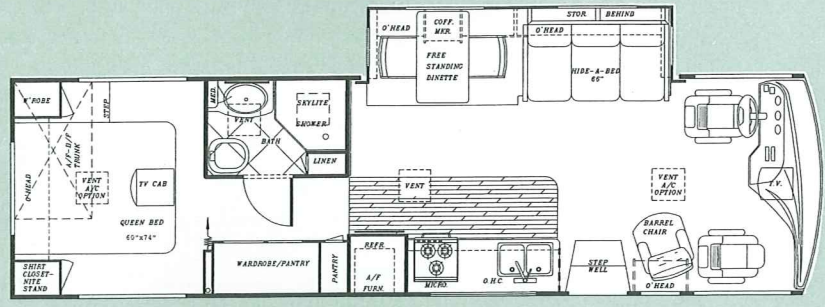


Sun Sport

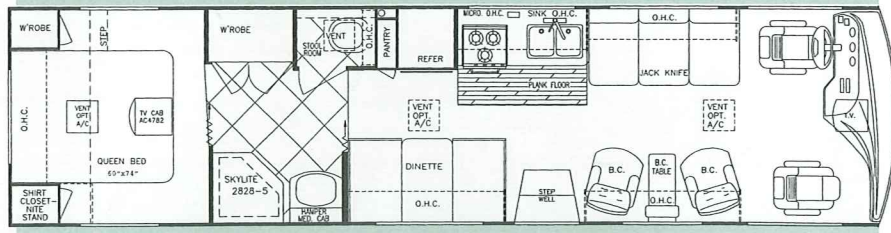
BY GULF STREAM®



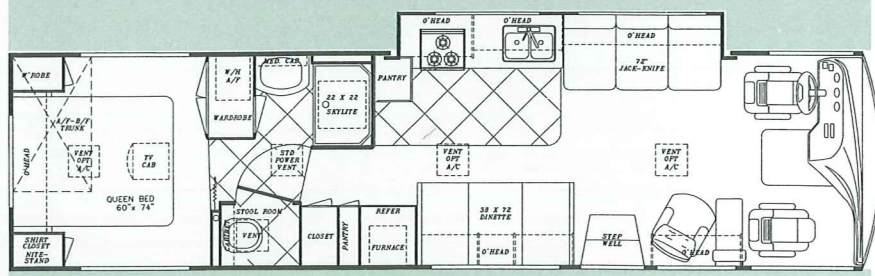
Model 8314 (Approx. 31' - 5", 101" wide)



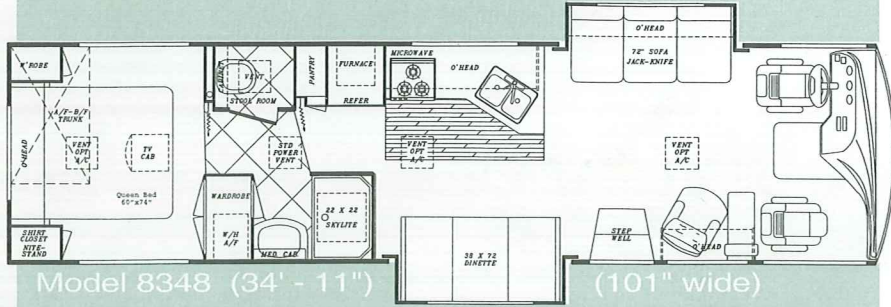
Model 8325 (Approx. 32' - 7", 101" wide)



Model 8334 (Approx. 34' - 6", 101" wide)



Model 8347 (Approx. 34' - 8", 101" wide)



Model 8348 (34' - 11") (101" wide)

Sun Sport

BY GULF STREAM®

Interior and Decor

- Nearly 7' of Interior Ceiling Height
- Large Residential Size Cabinetry
- Oak Knife Holder in Kitchen Countertop
- New Automotive Dash Design w/Overhead Television
- Windshield Privacy Drape
- Designer Cloth Driver/Passenger Seats
- Upgrade Deluxe Carpet w/Pad
- Deluxe Quality Furniture
- 3-Way Driver Seat
- Coordinated Bedspread
- Decorative Mirror
- Generous Overhead Storage
- Extra Large Under Bed Storage
- Mid Door Carpeted Stepwell Cover
- Window Valances
- Silverware Drawer & Drawer Front (LES)

Exterior and Construction

- **"Cradle of Strength":**
 - 1-1/2" Tubular Steel Cage
 - Construction on Sidewalls and Roof
 - Welded Steel Truss Sub-Floor System
- Vacuum-Bond Laminated Sidewalls
- Wide-Body Construction
- Block Foam Insulated Roof & Sidewalls
- Heated & Fully-Enclosed Holding Tanks
- Tri-Mark Exterior Storage Door Latches
- Radius Entry Door
- Smooth Fiberglass Exterior
- Automotive Style Aluminum Front Grill
- Tinted Windshield and Windows
- Outstanding Exterior Storage
- Deluxe Outside Mirrors
- Seamless Rubber Roof
- Ducted Roof Air Conditioning

Bath and Water

- Demand Water System
- City Water Hook-Up
- Double Stainless Steel Sink
- Tub/Shower (most models)
- Marine Toilet
- Gravity Drains on Fresh Water Lines
- Skydome in Shower (most models)

Heating, Ventilation & A/C

- 40,000 BTU Ducted Furnace w/Elect. Ign.
- Pre-Wired for Ducted Roof A/C

Deluxe Standard Features

- 19" Color TV w/Remote
- Microwave Oven
- 6 Gal. Elect. Ign. Water Heater
- TV Antenna w/Amp and Boost & 2 Jacks
- Spare Tire
- Wheel Covers
- AM/FM Cassette Stereo w/4 Speakers
- Monitor Panel
- Generator Ready
- Converter w/Battery Charger
- Auto Start Switch

Chassis

- FORD - Super Duty w/Triton V-10 and 4-Speed Automatic Trans.
- GM - 454 CID V-8 Engine w/Electronically Shifted 4-Speed Automatic Transmission (Opt. only on 8314)
- Electronic Ignition
- Power Steering and Brakes
- High Capacity Auto. Heater & A/C - w/R134 Environmental Refrigerant
- Tilt Steering Wheel
- Cruise Control

Appliances

- 3-Burner High-Performance Range
- Lighted, Power Range Hood
- 2-Door, 2-Way Refrigerator

Electrical Systems

- Easy-Access Dual Battery Syst.
- 12-Volt, 45-Amp Converter
- Electric Supply Cord
- Electric Overload Protection
- Generator Compartment
- Automotive-Type, Color-Coded Wiring

Popular Options

- Exterior Radio/Cassette Compartment
- 6-Panel Wood Refrigerator Inlay
- Wood Plank Flooring in Kitchen
- Upgrade Exterior Paint Scheme w/Bra

Specifications

MODEL	8314	8325	8334	8347	8348
FORD CHASSIS	V-10	V-10	V-10	V-10	V-10
Wheelbase	190"	208"	228"	228"	228"
GVWR	18,000 lb.	18,000 lb.	18,000 lb.	20,500 lb.	20,500 lb.
Front Gross Axle Weight Rating	7,000 lb.	7,000 lb.	7,000 lb.	7,000 lb.	7,000 lb.
Rear Gross Axle Weight Rating	11,000 lb.	11,000 lb.	11,000 lb.	13,500 lb.	13,500 lb.
CHEVY CHASSIS (Vortex)	454	N/A	N/A	N/A	N/A
Wheelbase	190"	N/A	N/A	N/A	N/A
GVWR	16,500 lb.	N/A	N/A	N/A	N/A
Front Gross Axle Weight Rating	5,500 lb.	N/A	N/A	N/A	N/A
Rear Gross Axle Weight Rating	11,000 lb.	N/A	N/A	N/A	N/A
*Exterior Length	31' - 5"	32' - 7"	34' - 6"	34' - 8"	34' - 11"
*Exterior Height (with A/C)	11' - 11"	11' - 11"	11' - 11"	11' - 11"	11' - 11"
Overall Width	101"	101"	101"	101"	101"
Interior Height	83"	83"	83"	83"	83"
Interior Width	97"	97"	97"	97"	97"
*Fresh Water Tank	50 Gal.	75 Gal.	75 Gal.	75 Gal.	75 Gal.
*Gray Holding Tank	50 Gal.	50 Gal.	50 Gal.	50 Gal.	50 Gal.
*Black Holding Tank	50 Gal.	50 Gal.	50 Gal.	50 Gal.	50 Gal.
Water Heater w/DSI	6 Gal.	6 Gal.	6 Gal.	6 Gal.	6 Gal.
LP Gas Tank (LT/LES)	85 lbs.	85 lbs.	85 lbs.	85 lb.	85 lb.
Fuel Capacity (Ford/GM)	75/60 Gal.	75 Gal.	75 Gal.	75 Gal.	75 Gal.
Furnace (BTU's)	40,000	40,000	40,000	40,000	40,000

*Approximate, and subject to change without notice.

For further information, contact your local dealer or Gulf Stream. Gulf Stream Coach, Inc. reserves the right to make changes in prices, colors, materials, components and specifications and to discontinue models at any time without notice or obligation. Gulf Stream Coach, Inc. assumes no responsibility for any error in type or print reproduction of specifications or floor plans. TP ER 25M 1/99



P.O. BOX 1005 • NAPPANEE, IN 46550

1-800-289-8787, Ext. 3288

Visit our Web Site at:
www.GULFSTREAMCOACH.com