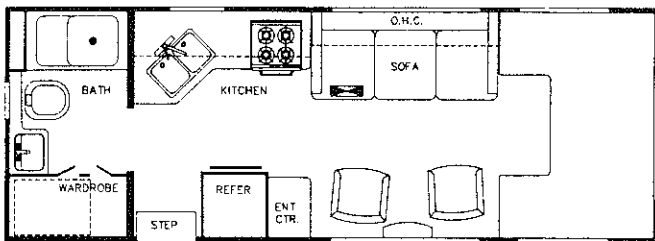


12193

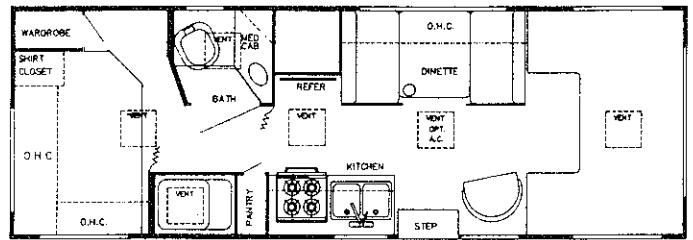
Ultra SUPREME

by GULF STREAM

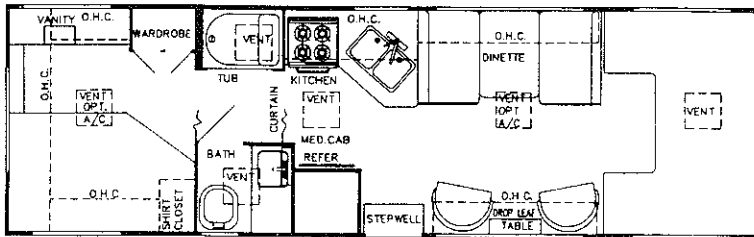
FLOORPLANS



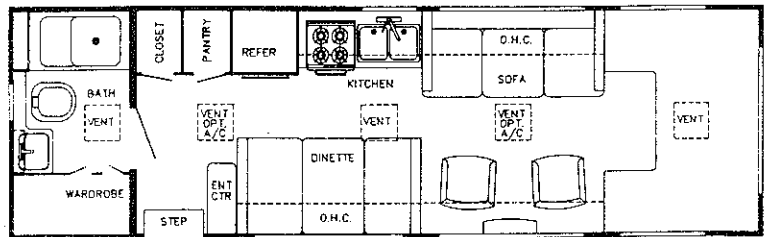
Model 6233



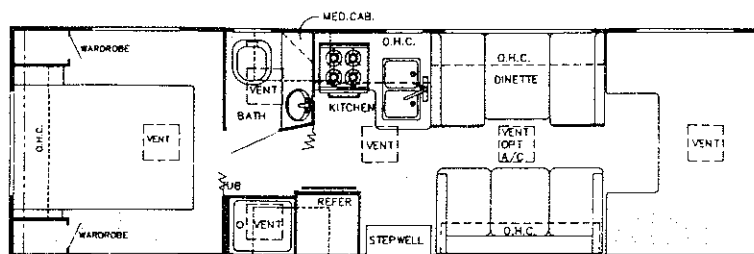
Model 6242



Model 6262 (Twin Bed Option)



Model 6263



Model 6272

Gulf Stream Mini-Motorhome

Standard Specifications

Exterior & Construction

- Welded Tubular Aluminum Cage Construction
- Tubular Steel Floor
- Laminated Floor W/Metal Underbelly
- High-Density Foam Insulation in Floors, Walls and Roof
- Smooth Laminated Fiberglass Exterior
- Aerodynamic Front Fiberglass Cap W/Flared Sideboards
- 1-Piece Fiberglass Rear Cap
- Crowned EDPM Rubber Roof
- Expansive, Hinged Below-Floor Storage (Basement Models)
- Protective Bodyside Molding
- Distinctive Exterior Graphics
- Expansive Radius Slider Windows
- Self-Stowing Entry Step
- Front Cabover Windows
- Pre-Wired and Reinforced for Roof Air
- Outside Entry Grab Handle
- Porch Light
- Deadbolt Lock on Entry Door

Electrical

- Easy-Store 25' Electrical Supply Cord
- Overhead Reading Lights
- 110-Volt Receptacles
- Ground Fault Circuit Interrupter
- Well-Illuminated Interiors
- Outside Receptacle

Interior & Decor

- 6'-8" Interior Height
- Stile-Constructed Oak Cabinetry
- Separate Dinette
- Barrel Chairs (Some Models)
- Generous Overhead Storage
- Deluxe Carpet W/Pad (Through-Out)
- Brass Accent Trim on Overhead Cabinet Doors
- Decorator Window Curtains & Shades W/Fabric Valances
- Queen-Size Slider Bed - Cabover
- Full-Size Bed - Bedroom
- Decorative Radius-Corner Countertop W/Custom Edging
- Family-Style Folding Table (Some Models)
- Mini-Blinds Kitchen and Bath
- Fire Extinguisher
- Velour Fabrics
- Crowned, Carpeted Ceiling

Bath & Water

- Dual Holding Tanks - Approx. 50 Gal.
- Fresh Water Capacity - Approx. 42 Gal.
- Demand Water System
- City Water Hook-Up
- Tub/Shower Combo (Except 6272)
- Lavatory W/Base Cabinet Storage
- Built-In Medicine Cabinet
- Outside Fresh Water Tank Drain
- Quick-Recovery 6 Gal. W/H
- Power Vent in Bath
- Bath Convenience Accessories

Galley Appliances

- Oven W/Brushed Chrome Door
- Double Stainless Steel Sink
- Sink Covers
- 4-Burner Gas Range
- Lighted Power Range Hood
- Large, Single-Door Refrigerator
- Pre-Wired for Microwave

Heating, Ventilation & A.C.

- 25,000 BTU Ducted Furnace W/Thermostat
- Screened Entry Door
- 41 lb. Propane Tank

Chassis

- Ford Chassis
- 460 CID Engine
- 4-Speed Automatic Transmission W/Overdrive
- Tilt Wheel
- Power Brakes and Steering
- Deluxe Exterior Mirrors
- Radial Tires
- Gasoline Tank -
23' & 24' Models - Approx. 36 Gal
26' & 27' Models - Approx. 55 Gal



Gulf Stream Coach, Inc.
P.O. BOX 1005 • NAPPANEE, IN 46550

For further information and available floorplan options, contact your local dealer or Gulf Stream Coach, Inc. Also ask about our full line of Class A, Class C and micro-mini motorhomes, travel trailers, fifth wheels, van campers and van conversions. Gulf Stream Coach, Inc. reserves the right to make changes in prices, colors, materials, components and specifications and to discontinue models at any time without notice or obligation. Gulf Stream Coach, Inc. assumes no responsibility for any error in type or print reproduction of specifications or floorplans in this brochure.

IC 10M 10/93